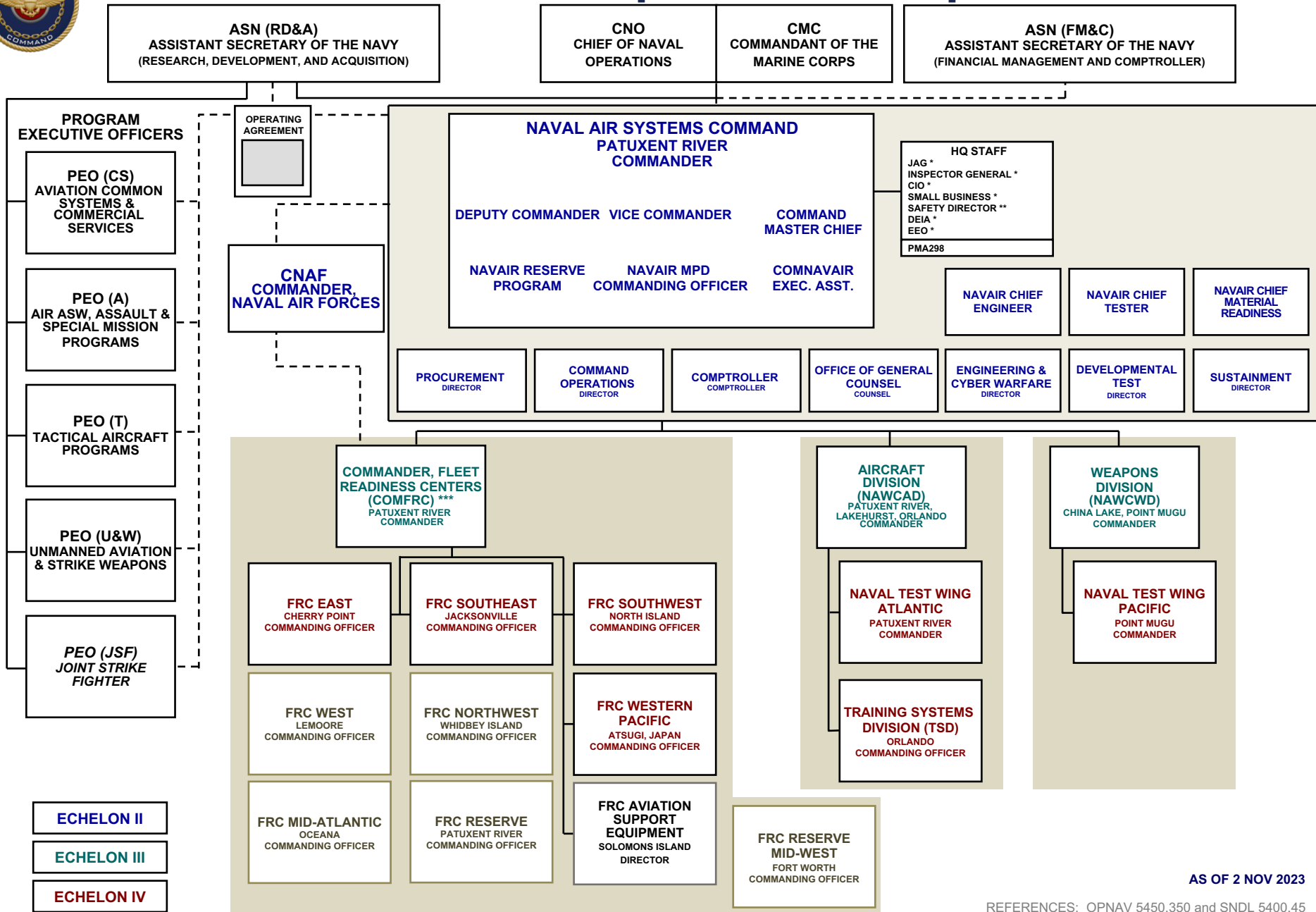




NAVAIR Enterprise Relationships



AS OF 2 NOV 2023

REFERENCES: OPNAV 5450.350 and SNDL 5400.45

* REPORTS DIRECTLY TO NAVAIR CMDR FOR RESPECTIVE AREA OF RESPONSIBILITY

** REPORTS DIRECTLY TO NAVAIR VICE CMDR FOR RESPECTIVE AREA OF RESPONSIBILITY

*** 5 INDUSTRIAL SITES FROM TOTAL OF 10 FRCs REPORT UP THROUGH COMFRC TO NAVAIR CMDR